



PSYCHOLOGY

THE YEAR IN REVIEW 2018

health

YORK
UNIVERSITÉ
UNIVERSITY



WELCOME FROM THE CHAIR



The address for the York University Psychology Department is on our Keele Campus in Toronto Ontario Canada but we are really located in the inspired efforts of our faculty, our contract instructors, our staff and our students. Our strength comes from our diversity, both in the voices of the people who are our department and in the breadth of interests which we explore. From studies in outer space to inner space. From what makes seniors trip and fall to what makes memories break. From studies of infancy to mental health disorders of childhood through the challenges of adolescence to adulthood and old age. From bilingualism to perfectionism. From pain to resilience. From how we see to how we are seen. From what enhances empathy to how emotional-focus helps us change.

Our intellectual journeys lead us to embrace quantitative and qualitative scientific understandings. We study at cellular and molecular levels and use advanced neuroscience technology. We engage the humanity which makes us people but are also fascinated by animals and the eco-system that supports us. We look back both appreciatively and critically at our rich historical legacies to inform our forward outlooks. Our scholars are concerned with the major issues that our society faces, from bullying to racism, asking questions that really matter and preparing students to be thoughtful and active.

We are not content to just talk the talk, but we walk the walk in developing research in our local communities, in collaborations with colleagues around our nation and in countries throughout the globe. Our QS World University Ranking was in the top 100 of all Psychology Departments, reflecting our collective accomplishments and the accumulated intensity of our research and practice. We hope you enjoy the glimpse of Psychology at York University that is provided through these pages and that it inspires you to speak with us and come visit us in person soon.

[Dr. Jennifer A. Connolly](#)

Psychology Department Chair

TABLE OF CONTENTS

RESEARCH ACCOMPLISHMENTS

Brain, Behaviour, & Cognitive Sciences (BBCS)	4
Clinical Psychology	9
Clinical-Developmental Psychology	13
Developmental Science	17
Historical, Theoretical and Critical Studies	19
Quantitative Methods	21
Social and Personality Psychology	23

INNOVATIVE FACULTY GRANTS & AWARDS

RESEARCH CHAIRS	30
-----------------	----

NEW FACULTY	32
-------------	----

ORGANIZED RESEARCH UNITS	33
--------------------------	----

RESEARCH IN THE MEDIA	36
-----------------------	----

TABLE OF CONTENTS

RESEARCH IN THE COMMUNITY	42
EMERGING RESEARCHERS	45
PSYCHOLOGY UNLOCKED EXPERIENTIAL LEARNING MOMENTS	
THE YORK TEACHING COMMUNITY CONTRACT FACULTY CONTRIBUTIONS	
PARTNERING WITH SENECA COLLEGE	
CLINICAL TRAINING IN ACTION YORK UNIVERSITY PSYCHOLOGY CLINIC	55
EDITORIAL TEAM & CONTACT US	56
PHOTO GALLERY	57

RESEARCH ACCOMPLISHMENTS

Brain, Behaviour, & Cognitive Sciences (BBCS)

Adams, L.C. & **MacDonald, S.E.** (2018). Spontaneous preference for primate photographs in Sumatran orangutans (*Pongo abelii*). *International Journal of Comparative Psychology*, 31, 1-16

Adams, L.C., Wilkinson, F.E., & **MacDonald, S.E.** (2017). Limits of spatial vision in orangutans (*Pongo abelii*). *Animal Behavior and Cognition*, 4(3): 204-222.

***Cutone, M.**, Dalecki, M., Goel, J., **Wilcox L.M.**, & Allison R.S. (2018). A statistical paradigm for assessment of subjective image quality results. *Society for Information Display Digest*, 48(1).

Dupuis-Desormeaux, M., Kaaria, T.N., Davidson, Z., & **MacDonald, S.E.** (2018). A ghost fence-gap: surprising wildlife usage of an obsolete fence crossing. *PeerJ (Biology)* . DOI 10.7717/peerj.5950

Dupuis-Desormeaux, M., Davy, C., Lathrop, A., Followes, E., Ramesbottom, A., Chreston, A., & **MacDonald, S. E.** (2018). Colonization and usage of an artificial urban wetland complex by freshwater turtles. *PeerJ* 6:e5423 doi.org/10.7717/peerj.5423

Elder, J.H. (2018). Shape from Contour: Computation and Representation. *Annual Review of Vision Science*, 4, 423-450.

Elder, J.H., Oleskiw, T. & **Fründ, I.** (2018). The role of global cues in the perceptual grouping of natural shapes. *Journal of Vision*, 18(12):14. (IF: 3.4)

Fraser, L.E., Mansfield, A., **Harris, L.R.**, Merino, D., Knorr, S., & Campos, J.L. (2018). The weighting of cues to upright following stroke with and without a history of pushing. *The Canadian Journal of Neurological Sciences* 45: 405-414

Freud, E., Culham, J. C., Namdar, G., & Behrmann, M. (2019). Object complexity modulates the association between action and perception in childhood. *Journal of Experimental Child Psychology*, 179, 56-72.

Fründ, I., & ***Stalker, E.** (2018). Human sensitivity to perturbations constrained by a model of the natural image manifold. *J Vis*, 18(11), 20.

Note: Faculty members' names are in red; Psychology students' names have a red asterisk next to them.

RESEARCH ACCOMPLISHMENTS

Brain, Behaviour, & Cognitive Sciences (BBCS)

Sudhama, A., ***Cutone, M.**, Hou, Y., Goel, J., Stolzka, D., Jacobson, N., Allison, R. S., & **Wilcox L. M.** (2018). Visually lossless compression of high dynamic range images: A large scale evaluation. Invited paper, *Society for Information Display Digest*, 48(1).

***Hartle, B., Wilcox, L. M., & Murray, R.F.** (2018) .Optimal combination of illusory and luminance-defined 3D surfaces: A role for ambiguity. *Journal of Vision*, 18(4):14, 1-15. <http://jov.arvojournals.org/article.aspx?articleid=267879>

Hawco, C., Voineskos, A.N., **Steeves, J.K.E.**, Dickie, E.W., Viviano, J.D., Downar, J., Blumberger, D., & Daskalakis, Z.J. (2018). Spread of Activity Following TMS is related to intrinsic resting connectivity to the salience network: A concurrent TMS-fMRI study. *Cortex* Jul 30;108:160-172. doi: 10.1016/j.cortex.2018.07.010. [Epub ahead of print].

Please inform us about a highlight you/your lab (including Honours thesis students, graduate students, and post-docs) has accomplished over the past year that you feel is particularly noteworthy.

***Brittney Hartle** published a paper and has been interviewed for an internship position at Oculus

Our space experiments and the terrific involvement of my postdoc (***Nils Bury**) and grad student (***Meaghan McManus**) in the process. – **Dr. Laurence Harris**

***Matthew Cutone** has written a software interface package for use with VR headsets that we have made freely available to researchers – **Dr. Laurie Wilcox**

The best part of the past year at York University was...

Teaching a 6-credit summer course with students doing research projects at the Toronto zoo, working with species like orang-utans, gorillas, turtles, monkeys, and llamas! They were AWESOME. – **Dr. Suzanne MacDonald**

Working with my students on exciting projects. – **Dr. Laurence Harris**

Having such amazingly productive students! – **Dr. Joel Katz**

Note: Faculty members' names are in red; Psychology students' names have a red asterisk next to them.

RESEARCH ACCOMPLISHMENTS

Brain, Behaviour, & Cognitive Sciences (BBCS)

Kelly, K.R., Gallie, B., & **Steeves, J.K.E.** Early monocular enucleation selectively disrupts neural development of face perception in the occipital face area. Submitted to *Experimental Eye Research*. Oct 3. pii: S0014-4835(18)30430-5. doi: 10.1016/j.exer.2018.09.013.

Liu, T. T., Nestor, A., Vida, M. D., Pyles, J. A., Patterson, C., Yang, Y., Yang, F. N., **Freud, E.**, & Behrmann, M. (2018). Successful Reorganization of Category-Selective Visual Cortex following Occipito-temporal Lobectomy in Childhood. *Cell reports*, 24(5), 1113-1122.

Moro, S., & **Harris, L. R.** (2018). "Vestibular-somatosensory interactions affect the perceived timing of tactile stimuli" *Experimental Brain Research* 236: 2877-2885. doi: 10.1007/s00221-018-5346-8.

Moro, S.S., & **Steeves, J.K.E.** (2018). Intact Dynamic Visual Capture in People with One Eye Multisensory Research DOI: 10.1163/22134808-20181311

Rafique, S.A., Richards, J.R., & **Steeves, J.K.E.** (2018). Altered white matter connectivity associated with visual hallucinations following occipital stroke. *Brain and Behaviour*. 8(6):e01010.

Schmidtman, G. & **Fründ, I.**, (2019). Radial frequency patterns describe a small and perceptually distinct subset of all possible planar shapes. *Vision Res*, 154, 122-130.

Sudhama, A., ***Cutone, M.**, Hou, Y., Goel, J., Stolzka, D., Jacobson, N., Allison, R.S., & **Wilcox L.M.** (2018). Visually lossless compression of high dynamic range images: A large scale evaluation. Invited paper, *Society for Information Display Digest*, 48:1.

Tvetskov, N., Madani, B., Krimus, L., **MacDonald, S.E.**, & Zayed, A. (2018). A new protocol for measuring spatial learning and memory in the honey bee *Apis mellifera*: effects of behavioural state and cGMP. *Insectes Sociaux*, DOI 10.1007/s00040-018-0641-8

Note: Faculty members' names are in red; Psychology students' names have a red asterisk next to them.

RESEARCH ACCOMPLISHMENTS

Brain, Behaviour, & Cognitive Sciences (BBCS)

Wilder, J., **Fründ, I.**, & **Elder, J.H.** (2018). Frequency tuning of natural shape perception revealed by classification image analysis. *Journal of Vision*, 18(8):9. (IF: 3.4)

Wong, N.A., Rafique, S.A., Kelly, K.R., Moro, S.S., Gallie, B.L., & **Steeves, J.K.E.** (2018). Altered white matter structure in the visual system following early monocular enucleation. *Human Brain Mapping*, 39:133-144.

Li, J., Sajad, A., Marino, R., Yan, X., Sun, S., Wang, H., **Crawford, J. D.** (2017). Effect of allocentric landmarks on primate gaze behavior in a cue conflict task. *J Vis.* 17(5):20

***McLaughlin, P. M., *Curtis, A. F., *Branscombe-Caird, L. M., *Comrie, J. K., & Murtha S. J.E.** (2017). The feasibility and potential impact of brain training games on cognitive and emotional functioning in middle-aged adults. *Games for Health Journal*. <http://online.liebertpub.com/doi/pdfplus/10.1089/g4h.2017.0032>

***McManus, M., *D'Amour, S., & Harris, L.R.** (2017). "Using optic flow in the far peripheral field". *Journal of Vision*. 17 (8):3, 1-11 doi: 10.1167/17.8.3

Kim, S.N., Saberi, F.M., **Wiseheart, M.**, & **Rosenbaum, R.S.** (2018). Ameliorating episodic memory deficits in developmental (congenital) amnesia. *Journal of the International Neuropsychological Society*, 24, 1003-1012.

The best part of the past year at York University was...

To join the department of Psychology, and to become a member of the vibrant Centre for Vision Research and the VISTA program. – **Dr. Erez Freud**

Due to the teaching in the fall 2017, I started to set up my lab in January 2018 and I feel that most of the processes are now working, the first paper is published and more are on the way. – **Dr. Ingo Fründ**

As always, the best part of my year at York are my students and colleagues. – **Dr. Laurie Wilcox**

Note: Faculty members' names are in red; Psychology students' names have a red asterisk next to them.

RESEARCH ACCOMPLISHMENTS

Brain, Behaviour, & Cognitive Sciences (BBCS)

What was your most exciting research finding or activity this past year?

The most exciting activity of this past year was to set up my lab at York University. We are already collecting data and hope to have exciting findings to share in 2019. – Dr. Erez Freud

We found a way to measure pretty complex invariances in scene perception. This isn't published yet, but should be soon. – Dr. Ingo Fründ

I cannot give the space project as my answer as we are only beginning this study and the "findings" will not be available for a few years. So I will say that it was associated with the project I am doing with my masters student Jon Kim in which we measured the errors people make in assessing where the world is after they have moved.

– Dr. Laurence Harris

Online Learning Initiatives

I have two fully online courses (Sensation and Perception I and II).

They are hosted on Moodle, and the upper level course includes a written assignment for which students must find an original article and report methodological details that are relevant to the course. – Dr. Laurie Wilcox

Note: Faculty members' names are in red; Psychology students' names have a red asterisk next to them.

RESEARCH ACCOMPLISHMENTS

Clinical Psychology

***Azam, M. A.**, Ritvo, P., ***Fashler, S. R.**, & **Katz, J.** (2018). Stressing the feedback: Attention and cardiac vagal tone during a cognitive stress task. *Cognition and Emotion*, 32(4), 867-875. doi: 10.1080/02699931.2017.1346500. Epub 2017 Jul 7.

Carson, N., **Rosenbaum, R.S.**, Moscovitch, M., & Murphy, K.J. (2018). The self-reference effect and self-reference recollection effect for trait adjectives in amnesic mild cognitive impairment. *Journal of the International Neuropsychological Society*, 24, 821-832.

***Chafe, D.**, & **Mongrain, M.** (2018). *Self-Kindness and Self-Criticism Extracted from The Self-Compassion Scale*. Conference of the Canadian Psychology Association, Montreal, June 2018.

Craver, C.F. & **Rosenbaum, R.S.** (2018). Consent without memory. In K. Michaelian, D. Debus, and D. Perren (Eds.), *New Directions in the Philosophy of Memory*. Routledge.

Ekstrom, A., Spiers, H.J., Bohbot, V.D., & **Rosenbaum, R.S.** (2018). *Human Spatial Navigation*. Princeton University Press.

Danckert, J., Mugon, J., Struk A., & **Eastwood, J. D.** (2018). Boredom: What is it good for? In H. Lench (Ed.) *The function of emotions*, Page 93-119, Springer

Eastwood, J. D. (2018). *Boredom*. Roundtable discussion at the Helix Center, April 21; New York, NY. <http://www.helixcenter.org/roundtables/boredom/>

Eastwood, J. D., & ***Gorelik, D.** (2018, September). *Human Boredom: definition, mechanisms, function and causes*. Oral presentation given at the University of Natural Resources and Life Sciences (BOKU) workshop, Vienna, Austria.

***Flett, A.L.**, Memedoska, S., ***Battaglia, A. M.**, & **Goldberg J. O.** (2018, November). *Where to turn in times of trouble: University students' willingness to seek help from residence dons*. Poster presented at the 71st annual meeting of the Ontario Psychological Association, Toronto, ON.

Note: Faculty members' names are in red; Psychology students' names have a red asterisk next to them.

RESEARCH ACCOMPLISHMENTS

Clinical Psychology

Hsu, C.F., Propp, L., Panetta, L., Martin, S., *Dentakos, S., Toplak, M.E. & Eastwood, J.D. (2018). Mental effort and discomfort: Testing the peak-end effect during a cognitively demanding task. *PLOS ONE*.

Please inform us about a highlight you/your lab (including Honours thesis students, graduate students, and post-docs) has accomplished over the past year that you feel is particularly noteworthy.

*Kainat Zahra Syeda (Clinical psychology in Pakistan: An integration of indigenous and Western approaches in the treatment of mental illness, FW 2017/2018).

What was your most exciting research finding or activity this past year?

Finding: greater experiences of transphobia, biphobia, and homophobia are associated with greater PTSD symptoms, dissociative symptoms, and emotion dysregulation among LGBTQ+ people who have experienced psychological trauma - Dr. Leah Keating

By far, my most exciting research activity of 2018 was filming a research demonstration of the selfie harm study we published this year for a TV special by ABC News 20/20 with Diane Sawyer. A film crew from NYC came to York over two days, and we filmed 15 students re-enacting the experimental procedure and interviewed them on-camera about their experience. – Dr. Jennifer Mills

Some individuals perform compassionate actions because they feel pressured to do so. This is true for needy individuals, and those who are insecurely attached. In this case, the act of kindness does not pay off and has a negative impact on the provider.

– Dr. Myriam Mongrain

Note: Faculty members' names are in red; Psychology students' names have a red asterisk next to them.

RESEARCH ACCOMPLISHMENTS

Clinical Psychology

Mathews, A. (Chair), Cullen, K., ***Male, D.** & **Fergus, K.** (June, 2018). *Clinical considerations and strategies for online engagement and retention: How three clinicians encountered and adapted to the challenges of delivering internet-based interventions*. Symposium presented at the Canadian Association for Psychosocial Oncology Annual Conference, Toronto, ON.

Mills, J.S., Musto, S., Williams, L., & Tiggemann, M. (2018). "Selfie" harm: Effects on mood and body image in young women. *Body Image*, 27, 86-92. DOI: 10.1016/j.bodyim.2018.08.007.

Mills, J.S., Weinheimer, L.A., Polivy, J., & Herman, C.P. (2018). Are there different types of dieters? A review of personality and dietary restraint. *Appetite*. DOI: 10.1016/j.appet.2018.02.014

Mongrain, M., ***Barnes, C.**, ***Barnhart, R.**, & Zalan, L. B. (2018). Acts of Kindness Reduce Depression in Individuals Low on Agreeableness. *Translational Issues in Psychological Science*, 4(3), 323. DOI: [10.1037/tps0000168](https://doi.org/10.1037/tps0000168)

Please inform us about a highlight you/your lab (including Honours thesis students, graduate students, and post-docs) has accomplished over the past year that you feel is particularly noteworthy.

2018 winner of the Bultz Best Student Oral Presentation award to PhD Candidate, ***Molly McCarthy**

<http://yfile.news.yorku.ca/2018/07/20/phd-candidate-earns-award-for-research-on-intimacy-after-colorectal-cancer/> - **Dr. Karen Fergus**

Note: Faculty members' names are in red; Psychology students' names have a red asterisk next to them.

RESEARCH ACCOMPLISHMENTS

Clinical Psychology

Price, T.J., Basbaum, A.I., Bresnahan, J., Chambers, J.F., de Koninck, Y., Edwards, R.R., Ji, R.R., **Katz, J.**, Kavelaars, A., Levine, J.D., Porter, L., Schechter, N., Sluka, K.A., Terman, G.W., Wager, T.D., Yaksh, T.L., Dworkin, R.H. (2018). The transition to chronic pain: Opportunities for novel therapeutics. *Nature Reviews Neuroscience*, 19 (7), 383-384. doi: 10.1038/s41583-018-0012-5

Rahman, Q. A., Janmohamed, T., Pirbaglou, M., Clarke, H., Ritvo, P., Heffernan, J.M., & **Katz, J.**, (2018). Defining and predicting pain volatility in users of the Manage My Pain app: Analysis using data mining and machine learning methods. *Journal of Medical Internet Research*, 20(11):e12001. DOI: 10.2196/12001

Rose, A. L., ***Atkey, S. J.**, & **Goldberg, J. O.** (2018). Self-Stigma in youth: Prevention, intervention and the relevance for schools. In A. Leschied, D. H. Saklofske, & **G.L. Flett** (eds.), *Handbook of School-based Mental Health Promotion*. New York, NY: Springer Publishing

Shannon A., **Goldberg, J. O.**, **Flett, G. L.**, & Hewitt, P. L. (2018). The relationship between perfectionism and mental illness stigma. *Personality and Individual Differences*, 126, 66 – 70.

***Stokes, P.**, & **Mongrain, M.** (2018). *The Role of Adult Attachment and General and Domain-Specific Self-Efficacy in Predicting Compassionate Action*. 1st Canadian Scientific Meeting on Well-Being, Toronto, May 2018.

The best part of the past year at York University was...

The amazing work of our students, both graduate and undergraduate. – **Dr. Mary Desrocher**

Having the opportunity to teach undergraduate students about psychology of women and gender, and teaching/ learning from such determined and thoughtful students and working with such an incredibly supportive undergraduate department; Jennifer Malisani is amazing! – **Dr. Leah Keating**

Note: Faculty members' names are in red; Psychology students' names have a red asterisk next to them.

RESEARCH ACCOMPLISHMENTS

Clinical-Developmental Psychology

***Barlow-Krelina, E., Turner, G. R.,** Akbar, N., Banwell, B., ***Lysenko, M.,** Yeh, E. A., Narayanan, S., Collins, L. D., Aubert-Broche, B., & **Till, C.** (In Press). Enhanced recruitment during executive control processing in cognitively preserved patients with pediatric-onset multiple sclerosis. *Journal of the International Neuropsychological Society*, in press.

Campbell, L., **Pillai Riddell, R.,** Cribbie, C., Garfield, H., & Greenberg, S. (2017). Preschool children's coping responses and outcomes in the vaccination context: child and caregiver transactional and longitudinal relationships. *Pain*, 159(2), 314-330. doi: 10.1097/j.pain.0000000000001092. (Won editor's choice distinction).

Connolly, J., Invited Panelist, *Youth Homelessness*, Annual Eric Jackman Lecture Sponsored by LaMarsh Centre for Child and Youth Research and United Way, Toronto, December 2018.

Connolly, J., *Wincentak, K., & *Baird, K. (2018) Dating across the life span. Marc Bornstein (Ed), SAGE Encyclopedia of Lifespan Human Development.

***Deotto, A.,** Westmacott, R., Fuentes, A., & **Desrocher, M.** (2018). Does stroke impair academic achievement in children? The role of metacognition in math and spelling outcomes following pediatric stroke. In print, *The Journal of Clinical and Experimental Neuropsychology*.

***Doidge, J., & Toplak, M. E.** (2018). Cognitive Training and ADHD: Sizing up the Evidence. Available at: <http://caddac.ca/adhd/document/treatment-of-adhd-in-children/>; <http://caddac.ca/adhd/understanding-adhd/in-adulthood/treatment/>

***Ho, H., Perry, A., & Fergus, K.** (2018). Looking back and moving forward: The experiences of Canadian parents raising an adolescent with ASD. *Research in Autism Spectrum Disorders*, 52, 12-22.

Hsu, C. F., Propp, L., Panetta, L., Martin, S., **Dentakos, S., Toplak, M. E., & Eastwood, J. D.** (2018). Mental effort and discomfort: Testing the peak-end effect during a cognitively demanding task. *PLoS One*, 13(2), e0191479. doi:10.1371/journal.pone.0191479

Note: Faculty members' names are in red; Psychology students' names have a red asterisk next to them.

RESEARCH ACCOMPLISHMENTS

Clinical-Developmental Psychology

***Ncube, B., Perry, A., & Weiss, J.** (2018). The quality of life of children with severe developmental disabilities. *Journal of Intellectual Disability Research*, 62(3), 237-244.

Malin, A.J., ***Riddell, J.**, McCague, H., & **Till, C.** (2018). The relationship among urinary fluoride, urinary iodine and serum thyroid stimulating hormone levels among adults living in Canada. *Environment International*, published online Oct 10;121(Pt 1):667-674. doi: 10.1016/j.envint.2018.09.026

Muller, R. T. (2018). *Trauma and the struggle to open up: From avoidance to recovery and growth*. New York: W. W. Norton & Company.

Patterson, A., **Perry, A.**, & ***Shine, R.N.** (in press). Family Quality of Life when there is more than one child with a developmental disability. *Journal on Developmental Disabilities*.

Our most exciting research activity this year has been the opportunity to engage in participatory action research with two community agencies (YRCAS and Simcoe County CAS) to co-develop a model of therapeutic foster care for girls who are victims of sex trafficking. We began this collaboration at the request of the CAS agencies and is a great opportunity to bridge the gap between science and pressing societal issues.

– **Dr. Jennifer Connolly**

The finding that, in community samples, children with epilepsy are having difficulties with autobiographical memory and executive functioning. These children are underserved in terms of interventions, and our next research steps are to create interventions to help them with their documented problems. – **Dr. Mary Desrocher**

Finding that an increase of 1 mg/L of urinary fluoride concentration during pregnancy is associated with a decrease of Full Scale IQ by 4.5 points in young boys living in Canada. These findings underscore the need to reduce fluoride intake during pregnancy. – **Dr. Shayna Rosenbaum**

I went as an invited visiting professor to University College London's Department of Neuroscience, Physiology and Pharmacology. – **Dr. Rebecca Pillai-Riddell**

We showed that children with autism can benefit from cognitive behaviour therapy, in meaningful ways, with benefits to their emotion regulation skills. – **Dr. Jonathan Weiss**

Teaching graduate students! – **Dr. Jonathan Weiss**

Note: Faculty members' names are in red; Psychology students' names have a red asterisk next to them.

RESEARCH ACCOMPLISHMENTS

Clinical-Developmental Psychology

Perry, A., Charles, M., ***Ncube, B.**, & **Weiss, J.** (in press). The GO4KIDDS school satisfaction scale. *Journal of Applied Research in Intellectual Disabilities*. DOI 10.1111/jar.12532

Perry, A., Koudys, J., Prichard, E.A., & ***Ho, H.** (2018). Follow-up study of youth who received EIBI as young children. *Behavior Modification*. DOI 10.1177/0145445517746916.

Pillai Riddell, R., O'Neill, M., Campbell, L., Taddio, A., Greenberg, S., & Garfield, H. (2018). The ABCD's of Pain Management: A Double-Blind Randomized Controlled Trial for a Brief Educational Video for Parents of Young Children undergoing Vaccination. *Journal of Pediatric Psychology*, 43(3), 224–233, doi:10.1093/jpepsy/jsx122 (Won editor's choice distinction)

***Sehra, R.**, & **Desrocher, M.** *Impairments in Autobiographical Memory In Children with Epilepsy*. The Ontario Association of Consultants, Counselors, Psychometrists and Psychotherapists Conference. Toronto, Sept 20-22, 2018.

***Sehra, R.**, & **Desrocher, M.** *Impairments in Autobiographical Memory In Children with Epilepsy*. Presentation at the 29th International Congress of Applied Psychology, Montreal, June 26-30, 2018.

Till, C., ***Green, R.**, ***Grundy, J. G.**, Hornung, R., Neufeld, R., Martinez-Mier, A., Ayotte, P., Muckle, G., Lanphear. Community Water Fluoridation and Urinary Fluoride Concentrations in a National Sample of Pregnant Women in Canada, *Environmental Health Perspectives*, published online 10 October 2018 doi.org/10.1289/EHP3546

***Tint, A.** & **Weiss, J. A.** (2018). A qualitative study of the service experiences of women with autism spectrum disorder. *Autism*, 22(8), 928-937.
<https://doi.org/10.1177/1362361317702561>

Note: Faculty members' names are in red; Psychology students' names have a red asterisk next to them.

RESEARCH ACCOMPLISHMENTS

Clinical-Developmental Psychology

Toplak, M. E. (July, 2018). Longitudinal development of cognitive biases, cognitive abilities and their association. *Festschrift for Jonathan St. B. T. Evans, London Reasoning Workshop*, London, UK.

Weiss, J. A., Tajik-Parvinchi, D., Maughan, A., & Lake, J. (2018). Family wellness in intellectual and developmental disabilities: A balanced approach. *Current Developmental Disorders Reports*[PT1], 5(3), 157-164. doi: 10.1007/s40474-018-0145-2

Weiss, J. A., Thomson, K., Burnham Riosa, P., ***Albaum, C.**, ***Chan, V.**, ***Maughan, A.**, Tablon, P., & ***Black, K.** (2018). A randomized waitlist controlled trial of cognitive behavior therapy to improve emotion regulation in children with autism. *Journal of Child Psychology and Psychiatry*, 59(11), 1180-1191. Doi: 10.1111/jcpp.12915

Yu, R., De Bongardt, D., Josephson, W., **Pepler, D.**, & **Connolly, J.** (2018). Internalizing symptoms and dating violence perpetration in adolescence. *Journal of Adolescence*, 69, 88-91.

Please inform us about a highlight you/your lab (including Honours thesis students, graduate students, and post-docs) has accomplished over the past year that you feel is particularly noteworthy.

***Abid Azam** presented a poster at the 2018 World Congress on Pain in Boston on his research in mindfulness for pain.

***Vered Laman** presented a poster at the 2018 Annual Meeting of the Canadian Pain Society highlighting her smartphone-based mindful breathing application for reducing anxiety.

***Teresa Marin** had a baby girl!

***Brittany Rosenbloom** placed first in the Poster Competition at the 2018 Annual Meeting of the Canadian Pain Society for her research project involving persistent opioid use in children one year after major surgery (see yFile story [here](#)). – **Dr. Joel Katz**

This was an amazing year for OUCH lab students- our lab had both a Masters student (***Miranda Dilorenzo**) and a Ph.D. student (***Lauren Campbell**) win the CPA best thesis/dissertation award. Miranda Dilorenzo also ended up winning York University's silver Governor General's Award.

Note: Faculty members' names are in red; Psychology students' names have a red asterisk next to them.

RESEARCH ACCOMPLISHMENTS

Developmental Science

Anderson, J. A., ***Chung-Fat-Yim, A.**, Bellana, B., Luk, G., & **Bialystok, E.** (2018). Language and cognitive control networks in bilinguals and monolinguals. *Neuropsychologia*, 117, 352-363.

Anderson, J. A., ***Grundy, J. G.**, De Frutos, J., Barker, R. M., Grady, C., & **Bialystok, E.** (2018). Effects of bilingualism on white matter integrity in older adults. *NeuroImage*, 167, 143-150.

Arsalidou, M., Pawliw-Levac, M., Sadeghi, M., & **Pascual-Leone, J.** (2018). Brain areas associated with numbers and calculations in children: Meta-analyses of fMRI studies. *Developmental Cognitive Neuroscience*, 30, 239-250.

Giuliano, M., **Johnson, J.**, & **Pascual-Leone, J.** (2018, May). *Organismic brain arousal meditation used to improve cognitive performance*. Poster presented at Development 2018: A Canadian Conference on Developmental Psychology, Brock University, St. Catharines, ON.

Pascual-Leone, J. (in press). Growing minds have a maturing mental attention: A review of Demetriou and Spandouis (2018). *Intelligence*.

Setting up my research lab and working with smart and motivated undergraduate and graduate students. – **Dr. Thanujeni Pathman**

Note: Faculty members' names are in red; Psychology students' names have a red asterisk next to them.

RESEARCH ACCOMPLISHMENTS

Developmental Science

Pascual-Leone, J., Lee, C., & **Johnson, J.** (2018, May). Mental attention as a developmental factor in fraction problem solving. In S. Morra, M. Arsalidou, & J. Johnson (Organizers), *Task complexity and task analysis: Neo-Piagetian perspectives in cognitive modeling*. Symposium presented at the meetings of the Jean Piaget Society, Amsterdam, NL.

Pascual-Leone, J., & **Johnson, J.** (2018, May). *Fundamental measurement of mental-attentional capacity*. In J. Johnson (Organizer), *Mental capacity constraints on cognition: Studies from the Theory of Constructive Operators*, Symposium presented at Development 2018: A Canadian Conference on Developmental Psychology, Brock University, St. Catharines, ON.

Pathman, T., Coughlin, C., & Ghetti, S. (2018). Space and time in episodic memory: Effects of linearity and directionality on memory for spatial location and temporal order in children and adults. *PLOS ONE*, 13(11): e0206999. <https://doi.org/10.1371/journal.pone.0206999>.

Romero Escobar, M., **Johnson, J.**, & **Pascual-Leone, J.** (2018, July). *IRT parameters and developmental cognitive capacity: A vignette in multi-source data and item analysis in R*. Paper presented at the 11th Conference of The International Test Commission, Montreal, Canada.

Thomas-Sunesson, D., Hakuta, K., & **Bialystok, E.** (2018). Degree of bilingualism modifies executive control in Hispanic children in the USA. *International Journal of Bilingual Education and Bilingualism*, 21, 197-206.

Note: Faculty members' names are in red; Psychology students' names have a red asterisk next to them.

RESEARCH ACCOMPLISHMENTS

Historical, Theoretical, and Critical Studies

Green, C. D. (2018). *Images of the disciplining of psychology*.

Green, C. D. (2018). *Psychology and its cities: A new history of early American psychology*.

Rutherford, A. (2018). Feminism, psychology and the gendering of neoliberal subjectivity: From critique to disruption. *Theory & Psychology*, 28, 619-644.

Rutherford, A. (2018). Acknowledging rape: What the origins of the “1 in 5” statistic can teach us about sexual assault policy. *The Behavioral Scientist*. In Special Issue, “Nudge Turns 10” <http://behavioralscientist.org/what-the-origins-of-the-1-in-5-statistic-teaches-us-about-sexual-assault-policy/>

Pickren, W. E., & **Rutherford, A.** (Eds.) (2018). *125 years of the American Psychological Association*. Washington, DC: APA Books.

Teo, T. (2018). *Outline of theoretical psychology: Critical investigations*. London, UK: Palgrave Macmillan.

Teo, T. (2018). Homo neoliberalus: From personality to forms of subjectivity. *Theory & Psychology*, 28(5), 581-599. doi:10.1177/0959354318794899

Teo, T. (2018, August). *The conditions for the possibility of the psychological humanities*. In T. Teo and W. Pickren (Coauthors), *Interference in general psychology through the psychological humanities*. Symposium conducted at the Annual Convention of the American Psychological Association, San Francisco, CA.

Note: Faculty members' names are in red; Psychology students' names have a red asterisk next to them.

RESEARCH ACCOMPLISHMENTS

Historical, Theoretical, and Critical Studies

Participating in the Pathologies of Capitalism: Critical Psychology in an Age of Uncertainty conference with three of our graduate students this past November at the CUNY Graduate Center in NYC. Fifty invited critical psychologists from around the world met for two days to examine how to organize so that our work can contribute to positive social and political change. – Dr. Alexandra Rutherford

The impossibility of epistemic modesty in psychology: The subjectivity of the researcher is as much embedded in society, history and the larger culture as any other subjectivity. Political-economic conditions, the Zeitgeist, social characteristics, the academic habitus, personal idiosyncrasies, institutional realities, or politics can influence the questions, methodologies, interpretations, and applications of research. It is argued that internationalization, the historicity of the societal embeddedness of knowledge, and personal limitations should embolden epistemic modesty as a virtue.

In contrast, it is argued that epistemic grandiosity is the more common practice of scientists, which is analyzed on the background of the development of new idols, the neoliberal transformation of academia, and a post-truth society. Using instances from the natural and human sciences, the (im)possibility of epistemic modesty as part of epistemic subjectivity, and contours for a new critical psychology of science, are discussed. – Dr. Thomas Teo

Note: Faculty members' names are in red; Psychology students' names have a red asterisk next to them.

RESEARCH ACCOMPLISHMENTS

Quantitative Methods

***Counsell, A.**, Chalmers, R. P., & **Cribbie, R. A.** (in press). Comparing means under heteroscedasticity and nonnormality: Further exploring robust means modeling. *Journal of Modern Applied Statistical Methods*.

Davidson, H. & **Cribbie, R. A.** (in press). A more powerful familywise error controlling procedure for evaluating mean equivalence. *Communications in Statistics: Simulation and Computation*.

Davidson, H., Peters, K., Patton, H., O'Hagan, F. & **Cribbie, R. A.** (in press). Statistical software in Canadian university psychology courses. *Teaching of Psychology*.

***DiLorenzo, M.G., Pillai Riddell, R., Flora, D.B.,** & Craig, K.D. (2018). Infant clinical pain assessment: Core behavioural cues. *The Journal of Pain*, 19, 1024-1032.

***Doidge, J., Flora, D.B., & Toplak, M.E.** (in press). A meta-analytic review of sex differences on delay of gratification and temporal discounting tasks in ADHD and typically developing students. *Journal of Attention Disorders*.

Flora, D.B. (2018). *Statistical Methods for the Social and Behavioural Sciences: A Model-Based Approach*. London, UK: SAGE Publications.

In our 'Teaching of Psychology' paper we documented the use of statistical software in every undergraduate and graduate psychology statistics course in Canada. This paper sets benchmarks for observing trends in the use of software over time. – **Dr. Rob Cribbie**

Note: Faculty members' names are in red; Psychology students' names have a red asterisk next to them.

RESEARCH ACCOMPLISHMENTS

Quantitative Methods

Kim, Y. J. & **Cribbie, R. A.** (2018). The variance homogeneity assumption and the traditional ANOVA: Exploring a better gatekeeper. *British Journal of Mathematical and Statistical Psychology*, 71, 1-12. DOI: 10.1111/bmsp.12103.

Ng, V. K. & **Cribbie, R.A.** (in press). The gamma generalized linear model, log transformation, and the robust Yuen-Welch test for analyzing group means with skewed and heteroscedastic data. *Communications in Statistics: Simulation and Computation*.

Pek, J., & **Flora, D.B.** (2018). Reporting effect sizes in original psychological research: A discussion and tutorial. *Psychological Methods*, 23, 208-225.

*Winner of *Research Excellence Award* from the Quantitative Methods Section of the Canadian Psychological Association

***Rizeq, J., Flora, D.B., & McCann, D.** (in press). Construct validation of the Trauma Symptom Checklist-40 total and subscale scores. *Assessment*.

Shiskina, T., ***Farmus, L., & Cribbie, R. A.** (in press). Testing for a lack of relationship among categorical variables. *The Quantitative Methods for Psychology*.

Note: Faculty members' names are in red; Psychology students' names have a red asterisk next to them.

RESEARCH ACCOMPLISHMENTS

Social and Personality Psychology

Friesen, J., **Kawakami, K.**, Vingilis-Jaremko, L., Caprara, R., Sidhu, D., Williams, A., Hugenberg, K., Rodriguez-Bailon, R., Canadas, E., & Niedenthal, P. (in press). Gateways to the soul: The role of the eyes in intergroup emotion identification bias. *Journal of Personality and Social Psychology*.

Le, B. M., Impett, E. A., Lemay, E. P. **Muise, A.**, Tskhay, K. O. (2018). A meta-analytic examination of communality and relationship satisfaction. *Psychological Bulletin*, 144, 1-25.

Please inform us about a highlight you/your lab (including Honours thesis students, graduate students, and post-docs) has accomplished over the past year that you feel is particularly noteworthy.

***Francine Karmali**, winner of the Sandra Pyke Award, was offered a postdoc at the University of Toronto. – **Dr. Kerry Kawakami**

My honours student–***Amanda Bockaj**–won the best thesis in the psychology department. My other honours student presented her work as a data blitz at a local conference and won the prize for the most innovative research. – **Dr. Amy Muise**

***Dr. van Monsjou**, a recent graduate of our program, succeeded in publishing the very first empirical study on "shipping" (i.e., relationshiping), the act of becoming emotionally invested in fictional romantic couples. – **Dr. Raymond Mar**

A recent graduate of the lab, ***Dr. Katrina Fong**, has recently been hired at Explorer Research. – **Dr. Raymond Mar**

Note: Faculty members' names are in red; Psychology students' names have a red asterisk next to them.

RESEARCH ACCOMPLISHMENTS

Social and Personality Psychology

Kawakami, K. (2018). Chair Invited Symposium on The importance of social and personality psychology in the age of Trump. *Society of Personality and Social Psychology*, Atlanta, GA.

Kawakami, K., Friesen, J., & Vingilis-Jaremko, L. (2018). Visual attention to members of own and other groups: Preferences, determinants, and consequences. *Social Personality Psychology Compass*.12:312480, 1-16.

Mar, R. A. (2018). Evaluating whether stories can promote social cognition: Introducing the Social Processes and Content Entrained by Narrative (SPaCEN) framework. *Discourse Processes*, 5/6, 454–479.

Mar, R. A. (2018). Stories and the promotion of social cognition. *Current Directions in Psychological Science*, 27, 257–262.

Muise, A., Harasymchuk, C., Day, L. C., Bacev-Giles, C., Gere, J., & Impett, E. A. (2018). Broadening your horizons: Self-expanding activities promote desire and satisfaction in established romantic relationships. *Journal of Personality and Social Psychology*. Advanced online publication.

Muise, A., Maxwell, J., & Impett, E. A. (2018). What theories and methods from relationship research can contribute to sex research. *Annual Review of Sex Research*, 55, 540-562.

Phills, C. E., **Kawakami, K.**, Krusemark, D. R., & Nyguen, J. (2018). Does reducing implicit prejudice increase outgroup identification? The downstream consequences of evaluative training on associations between the self and racial categories. *Social Psychological and Personality Science*.

***van Monsjou, E. & Mar, R. A.** (in press). Interest and investment in romances. *Psychology of Aesthetics, Creativity, and the Arts*.

Note: Faculty members' names are in red; Psychology students' names have a red asterisk next to them.

RESEARCH ACCOMPLISHMENTS

Social and Personality Psychology

The best part of the past year at York University was...

One of the best moments was when my honours student won a best student poster award and ultimately won the best thesis award in the department. It was exciting to see an undergraduate student be recognized for her research achievements. – Dr. Amy Muise

Having the opportunity to teach undergraduate students about psychology of women and gender, and teaching/ learning from such determined and thoughtful students and working with such an incredibly supportive undergraduate department; Jennifer Malisani is amazing! – Dr. Leah Keating

Note: Faculty members' names are in red; Psychology students' names have a red asterisk next to them.

INNOVATIVE FACULTY GRANTS & AWARDS

Here are some examples of the diversity of external awards of faculty members in the 2017-2018 fiscal year (unless otherwise indicated). Unless otherwise noted, all amounts are the amount awarded for that year, not the grant total.

Dr. Jennifer Connolly

- Developing a Model of Care for Underage Victims of Sex Trafficking Anti-Human Trafficking Community Grant, Province of Ontario. With Simcoe County Children's Aid Society and York Region Children's Aid Society.
- 2018 Understanding Pathways to Underage Sex Trafficking, Ministry of Community Safety and Ministry of Community Safety and Correctional Services (in collaboration with York Region Police Services). (2018-2020)

Dr. James Elder

- York Research Chair (Tier I) in Human and Computer Vision, York University (2018-2023)

Dr. Erez Freud

"The representation of Weber's law in the human brain" - Junior Faculty Member Research Grant, Faculty of Health, York University

Dr. Laurence Harris

- NSERC: Multisensory interactions and the representation of the body in the brain
- CSA: The effect of long duration hypogravity on the perception of self-motion
- CFI: Full field vision and orientation
- NSERC CREATE: The brain in action (PI Doug Crawford)
- CFREF: Vision: Science to Applications (VISTA)

Dr. Joel Katz

- York University Research Leaders Award (2018)

Dr. Suzanne MacDonald

- Continuing funding from the Toronto and Region Conservation Authority (TRCA).

INNOVATIVE FACULTY GRANTS & AWARDS

Dr. Kerry Kawakami

- Gordon Allport Prize for the Best Article on Intergroup Relations (SPSSI) (2018)
- **Kawakami, K.**, Amodio, D. M., & Hugenberg, K. (2017). Intergroup perception and cognition: An integrative framework for understanding the causes and consequences of social categorization. *Advances in Experimental Social Psychology*, 55, 1-80.
- Social Sciences and Humanities Research Council of Canada (SSHRC) Insight Grant (2018-2023)
- Canadian Foundation for Innovation Fund (CFI) Infrastructure Operating Fund (2018)

Dr. Myriam Mongrain

- SSHRC Explore Grant, York University “*Distal and Proximal Predictors of Daily Compassionate Action*” (2018)

Dr. Amy Muise

- Caryl E. Rusbult Early Career Award (2018), Relationships Research Interest Group, Society for Personality and Social Psychology
- Early Researcher Award (2018), Ontario Ministry of Research, Innovation and Science

Dr. Juan Pascual-Leone

- Named Fellow of the Association for Psychological Science

Dr. Thanujeni Pathman

- NSERC Discovery Grant (2018-2023) Examining temporal memory and the factors that support its development

Dr. Shayna Rosenbaum

- Recipient of the James McKeen Cattell Sabbatical Award, The James McKeen Cattell Fund (international award)
- Vision: Science to Applications (VISTA) Research Grant (PI), (2018-2020)
“Computational, behavioural, and neuroimaging approaches to decoding human spatial navigation,” with J. Ryan and M. Kyan,
- Canadian Institutes of Health Research, Project Grant (2016-2020) (co-applicant), “Probing hippocampal integrity with ultra-high resolution MRI and behaviour in temporal lobe epilepsy,” with A. Khan (PI; Western University), S. Köhler (co-PI), I. Johnsrude, R. Menon, S. Mirsattari,
- Natural Sciences and Engineering Research Council, Discovery Grant (PI), “fMRI and patient studies of remote spatial and episodic memory,” (2015-2020)

Note: Faculty members’ names are in red; Psychology students’ names have a red asterisk next to them.

INNOVATIVE FACULTY GRANTS & AWARDS

Dr. Rebecca Pillai-Riddell

- Recipient of the 2018 Faculty of Graduate Studies teaching award.

Dr. Raymond Mar

- York University, Faculty of Health, Established Career Research Award

Dr. Alexandra Rutherford

- President, Society for General Psychology, Division 1 of the American Psychological Association (2018-19)
- Swiss National Science Foundation – member of the Advisory Board (2018-2022)
- *Mind Control in French-speaking Europe (MICE): The Scientific and Cultural Reception of Behaviour Therapy in France, Switzerland and Belgium (1960-1990)* Principal investigator: Rémy Amoureux, University of Lausanne
- Austrian Science Fund – International collaboration partner and member of the Scientific Advisory Board. (2018-2021) *The Psychological is Political: A Recent History of Feminist Psychology in Vienna*. Principal investigators: Nora Ruck, Rosa Costa, Vera Luckgei, Sigmund Freud University, Vienna
- Social Sciences and Humanities Research Council of Canada Insight Grant – Principal Investigator. *The Science and Politics of Gender: Feminist Psychology and its Publics in Late 20th-Century America* (2017-2021)

Dr. Jennifer Steeves

- Fostering Awareness of Age-Related Macular Degeneration and Charles Bonnet Syndrome (co-I; PI Marlene Goldman) *Canadian National Institute for the Blind Tuck McPhee Award* (2018)
- Non-invasive neuromodulation suite *NSERC Research Tools and Instruments Grant (PI)* (2018)
- Reverse engineering brain networks for scene and object processing with non-invasive neuromodulation *NSERC Discovery Grant (PI)* (2017-2022)

Dr. Thomas Teo

- Editor of Palgrave Studies in the Theory and History of Psychology. (2018)
- Nominated Co-editor of the Review of General Psychology (2018)
- SSHRC: Insight Grant. *Laying the Foundation for the Psychological Humanities: Histories and Theories of Subjectivity* (PI) (2017-2022)

INNOVATIVE FACULTY GRANTS & AWARDS

Dr. Maggie Toplak

- Faculty of Health Minor Research Grant May 2018 Competition Project entitled: Measuring the Experience of Effort in Children and Youth with Attention Deficit Hyperactivity Disorder (ADHD) (2018) Investigators: Toplak, M.E. & Eastwood, J.
- Social Sciences and Humanities Research Council of Canada, Principal Investigator Project entitled: Measuring cognitive sophistication: Towards developing a tool for assessing rational thinking in adolescents (2018-2023) Principal Investigator: Toplak, M. E., Collaborators: West, R. F. & Stanovich, K. E.

Dr. Jonathan Weiss

- South Asian Autism Awareness Centre Research Impact Award, South Asian Autism Awareness Centre (2018)
- York Research Chair in Autism and Neurodevelopmental Disability Mental Health, Faculty of Health, York University (2018)

Dr. Laurie Wilcox

- Elected as a Fellow in the Association of Psychological Science. *Fellow status is awarded to members who have made sustained, outstanding contributions to the science of psychology in the areas of research, teaching, service and/or application.*
- NSERC Discovery grant.
- NSERC Collaborative Research and Development grant "Distortions in virtual and augmented environments: Impact on performance and wellbeing" co-funded by Qualcomm Canada Inc.
- VPII grant from the Ontario Centre of Excellence (OCE) "Image quality assessment for stereoscopic display systems".

RESEARCH CHAIRS

CANADA RESEARCH CHAIRS (CRC)



Above Photos Left - Right:

Dr. Doug Crawford

Canada Research Chair (Tier 1) in Visual-Motor Neuroscience (CIHR)

Dr. Gordon Flett

Canada Research Chair (Tier 1) in Personality & Health (SSHRC)

Dr. Joel Katz

Canada Research Chair (Tier 1) in Health Psychology (CIHR)

Dr. Georg Zoidl

Canada Research Chair (Tier 1) in Molecular and Cellular Neuroscience (CIHR)

RESEARCH CHAIRS

YORK RESEARCH CHAIRS (YRC)



Above Photos Left - Right:

Dr. Laurence Harris

Tier 1 York Research Chair in Multisensory Integration

Dr. James Elder

Tier 1 York Research Chair in Human and Computer Vision

Dr. Ellen Bialystok

Tier 1 Walter Gordon York Research Chair in Lifespan Cognitive Development

Dr. Jonathan Weiss

Tier 2 York Research Chair in Autism and Neurodevelopmental Disability Mental Health

Dr. Shayna Rosenbaum

Tier 2 York Research Chair in Cognitive Neuroscience of Memory

NEW FACULTY



Dr. Phil Chalmers

The Psychology Department welcomes Dr. Philip Chalmers to the Quantitative Methods Area.

Dr. Chalmers' research focus involves latent variable modeling methods with an emphasis on Item Response Theory (IRT) techniques.



Dr. Erez Freud

The Psychology Department welcomes Dr. Erez Freud to the Brain Behaviour and Cognitive Sciences Area and Centre for Vision Research.

The Freud lab is focused on the investigation of the cognitive and neural processes that mediate our ability to perceive the world around us and to interact with objects in our environment.

ORGANIZED RESEARCH UNITS

INSTITUTE FOR SOCIAL RESEARCH (ISR)

- Contains the largest university-based survey research centre in Canada.
- Offers expert consulting in statistics for York faculty, graduate students and community members.
- Provides a range of “short courses” in statistical programs and analysis such as:
 - An Introduction to SAS for Windows
 - An Introduction to R
 - Accessing Canadian and International Data and Statistics
 - Introduction to Linear Regression Models
 - Using Computers in Qualitative Analysis: An NVivo 11 for Windows Workshop



**Institute for
Social Research**

Website: www.yorku.ca/isr

LAMARSH CENTRE FOR CHILD AND YOUTH RESEARCH

The LaMarsh Centre for Child and Youth Research is a collaborative group of faculty and students that supports community-engaged interdisciplinary research in health, education, relationships and development of infants, children, adolescents, emerging adults and families everywhere.

Dr. Naomi Andrews delivered a 2018 lecture: **“A Relational Perspective on Research and Evaluation in Community-Based Settings: Experiences from a Healthy Relationships Intervention Initiative”**. She is a post-doctoral fellow at the LaMarsh Centre and Mothercraft’s Breaking the Cycle program. She is interested in better understanding how healthy and unhealthy relationships impact children’s development, and how relationship focused interventions can be used to support at-risk populations.

Website: www.yorku.ca/lamarsh

ORGANIZED RESEARCH UNITS

CENTRE FOR VISION RESEARCH (CVR)

- The CVR is a pan-university research unit which brings together over thirty international leaders in human, biological and machine vision drawn from York researchers in the faculties of Health, Science, Engineering, Liberal Arts & Professional Studies (LAPS), Glendon, and Arts, Media, Performance & Design (AMPD).
- The centre has cutting-edge resources including a 3T MRI scanner, full-field visual displays, a rotating room, virtual reality systems, multiple robotic systems, and state-of-the-art psychophysics labs.
- We host two NSERC-funded CREATE training programs: “Training program in Data Analytics and Visualization” and “Vision and Action”.
- CVR trains over 130 graduate students and post-doctoral fellows and has close links with exchange programs especially with Germany.
- We will host an international conference at York on "Predictive Vision" in June 2019.
- CVR is integrated with the Canadian First Research Excellence Fund, Vision: Science-to-Applications (VISTA) program that substantially expands our program.
- We offer a week-long, all-expenses-paid international undergraduate summer school for 40 students focusing on visual science.
- CVR members give invited and key-note talks all over the world and published over 180 peer-reviewed articles including articles in Current Biology, Nature Methods, Nature Communications, and Proceedings of the National Academy of Science.
- CVR members are on the editorial board of many of the most significant vision-related journals including Perception, the Journal of Vision, ACM Transactions on Applied Perception, and the International Journal of Computer Vision.
- CVR’s research is funded by grants from NSERC, CIHR, CSA, SSHRC and several others.

Website cvr.yorku.ca

ORGANIZED RESEARCH UNITS

YORK CENTRE FOR AGING RESEARCH & EDUCATION (YU-CARE)

York University Centre for Aging Research and Education is involved in various activities including:

- Creating new educational opportunities for our students and the community.
- Supporting and conducting research that includes an interdisciplinary and holistic approach to health and wellness, and respects and recognizes cultural diversity.
- Working towards turning research findings into policies.
- Engaging in knowledge mobilization by sharing practical information with the general public and community agencies.
- Enhancing existing educational opportunities for professionals working with seniors.

YU-CARE CERTIFICATE IN AGING

The YU-CARE introduced a 4000 level 6-credit interdisciplinary course on Healthy Aging for students in Psychology, Kinesiology, Health Studies, and Global Health interested in attaining credits for the YU-CARE Certificate in Aging. Our aims are to guide undergraduate students in developing a holistic perspective on healthy aging and an appreciation of the factors that impact healthy aging.

Students will be exposed to research on a variety of 'healthy aging' topics of our faculty members across multiple disciplines through a 'meet the expert' video series. The course is novel in that it is a blended course design (40 of the time the students meet in class, and the remaining time they engage in learning activities online) that creates an opportunity for students to spend up to 40 hours outside the classroom applying their knowledge and enhancing their skills by engaging in an experiential "hands-on" activity with older adults while also supporting community-identified projects.

Website: <http://yucare.info.yorku.ca>

RESEARCH IN THE MEDIA

Profiling Psychology Faculty and Students from Various Media Sources

Seven York University researchers receive Early Researcher Award

YFile, Dr. Amy Muise

spark alive over time is challenging. **Amy Muise's** research, in the Department of Psychology, tests the idea that couples who engage in self-expanding activities will maintain higher sexual desire and relationship satisfaction over time. This is important given that long lasting, happy relationships are key contributors to overall health and well-being, and that lowering the divorce rate helps to reduce financial instability and negative health and psychological consequences for Canadian families.

Prof. Robert T. Muller publishes book on intricacies of trauma therapy

YFile, Dr. Rob Muller

"This book is about trauma. It's about the relationships in our lives that hurt and harm. It's about the ones that help and heal," said Muller. "Indeed when we study trauma, we see what a double-edged sword relationships are: trauma stems *from* them; recovery depends *on* them.

Answering the call: The Chair in Autism Treatment and Care Research

Kids Brain Health Network, Dr. Jonathan Weiss



Getting Word Out

- ✓ ASD Mental Health Blog: **40K+ views**
- ✓ TedX YorkU Salons: **100K - views**
- ✓ Lay Research Summaries Created - **90**
- ✓ Hashtag #TEDxYorkUAutInnov trended **40th** on Twitter across Canada
- ✓ Children, adolescents and young adults receiving direct mental health support through research conducted by the Chair - **93**
- ✓ Peer Reviewed Publications - **50** (and counting)

Note: All pictures/logos and excerpts of articles shown here belong to their respective publishers and sources.

RESEARCH IN THE MEDIA

York researchers invent novel computer vision system to extract 3D building models from a single image

YFile, Dr. James Elder



Cattell Fund Projects Include Explorations of Sensory Processes, Memory

Association for Psychological Science (APS), Dr. Shayna Rosenbaum

R. Shayna Rosenbaum

York University

My research program takes a multimethod approach of combining cognitive, patient-lesion, eye tracking, and neuroimaging methods to investigate the role of the hippocampus in episodic and spatial memory, and how these forms of memory relate to one another and to nonmnemonic abilities such as future decision-making. This work



We add it to drinking water for our teeth — but is fluoride hurting us?

Environmental Health News, Dr. Christine Till



Note: All pictures/logos and excerpts of articles shown here belong to their respective publishers and sources.

RESEARCH IN THE MEDIA

The Upside of Daydreaming: What you can learn about yourself from your daytime reveries.

U.S. News & World Report, Dr. Raymond Mar



Astronaut to conduct experiment designed by York University while in space

CBC News, Dr. Laurence Harris



Performing Acts of Kindness Can Reduce Depression in Disagreeable People

Psych Central, Dr. Myriam Mongrain

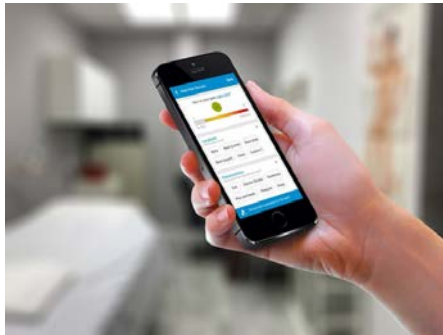
Highly disagreeable people often lack empathy, even in their close relationships, says lead author Myriam Mongrain, professor of psychology at York University's Faculty of Health. But, she points out, "everybody needs people."

Note: All pictures/logos and excerpts of articles shown here belong to their respective publishers and sources.

RESEARCH IN THE MEDIA

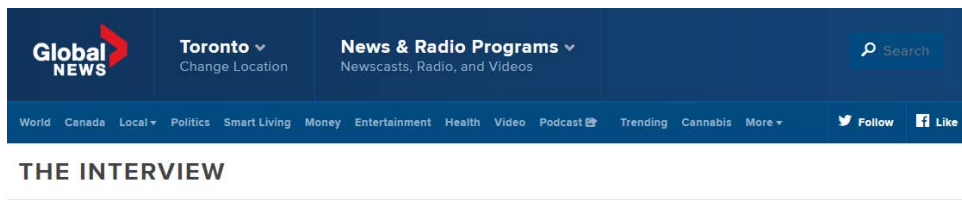
Researchers Predict Changes in Pain for Users of Pain Management App

Journal of Medical Internet Research, Dr. Joel Katz



Bullying & Trauma, Global News Toronto, Psychologist Robert T. Muller

Global News, Dr. Rob Muller



A Games pioneer, a leading light in research

The Globe and Mail, Dr. Jonathan Weiss

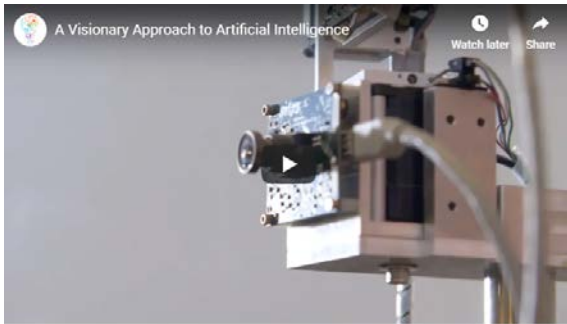
“He was able to demonstrate very early on, with the right efforts and adaptations, that people with intellectual and developmental disabilities could participate at many levels of competitive and recreational sport to their best potential,” says Jonathan Weiss, associate professor with the department of psychology at York University in Toronto, and York research chair in autism and neurodevelopmental disability mental health.

Note: All pictures/logos and excerpts of articles shown here belong to their respective publishers and sources.

RESEARCH IN THE MEDIA

A Visionary Approach to Artificial Intelligence

Research2Reality, Dr. James Elder



“Vision in particular is a really cool thing to study because we experience it every moment of our lives. We can do this real diversity of tasks: recognizing people, appreciating beauty. It's kind of automatic, and yet there are, in secret, these billions of neurons working away.”

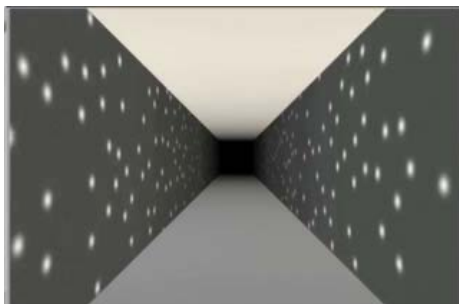
Study: Fluoride levels in pregnant women in Canada show drinking water is primary source of exposure to fluoride

YorkU News, Dr. Christine Till

“We found that fluoride in drinking water was the major source of exposure for pregnant women living in Canada. Women living in fluoridated communities have two times the amount of fluoride in their urine as women living in non-fluoridated communities,” said Christine Till, an associate professor of Psychology in York’s Faculty of Health and lead author on the study.

Making Sense of Human Senses in Space

NASA, Dr. Laurence Harris



Note: All pictures/logos and excerpts of articles shown here belong to their respective publishers and sources.

RESEARCH IN THE MEDIA

Study: Pain program helps surgery patients taper off opioids

UPI, Dr. Alex Radkewycz (University Health Network)



New way of measuring pain could lead to improved approaches in treatment

YFile, Dr. Joel Katz



York University/Canadian Space Agency Vection project blasting into space

YFile, Dr. Laurence Harris



Note: All pictures/logos and excerpts of articles shown here belong to their respective publishers and sources.

RESEARCH IN THE COMMUNITY

Dr. Amy Muise

<https://www.youtube.com/watch?v=BHmhGq4UNps>



Dr. Leah Keating

<https://traumadessentials.com/products/recordedwebinarwith-leah-keating-jenna-mckay>

Conducted a webinar on providing trauma therapy to LGBTQ+ clients through Trauma Essentials. I also provided a workshop at Trauma Talks, on the same issue. This work was done in collaboration with my colleague, Jenna MacKay, a social worker.

Dr. Thomas Teo

<https://www.theoreticalpsychology.org/teaching>

Critical pedagogy group of the Society for Theoretical and Philosophical Psychology



Note: All pictures/logos and excerpts of articles shown here belong to their respective publishers and sources.

RESEARCH IN THE COMMUNITY

Dr. Laurence Harris

We are working on an application for translating our test that assesses the relative contributions of vision, the body, and gravity to the perception of up, for a clinical setting using a portable VR system.

Dr. Raymond Mar
onfiction.ca

We maintain a site that prepares lay descriptions of empirical research for the lay public.

Dr. Suzanne MacDonald
www.rciscience.ca

I am the Vice-Chair of the Royal Canadian Institute for Science (RCI Science), which is a national organization founded in 1847 to share the results of scientific research (in all disciplines) with the general public.

Dr. Shayan Rosenbaum

Funded by a SHHRC knowledge translation grant, my team and I are working on producing a video to translate our research so that the results are clear and transparent to the broader public. We are determined to ensure our research is used to raise awareness and assist decision makers formulate public health policies that may help minimize health inequities.

Part of Research2Reality video series ; and Public lecture: "How memory changes with age." York University Scholars Hub, Vaughan Public Library, November 23, 2018.

RESEARCH IN THE COMMUNITY

Dr. Alexandra Rutherford

<http://feministvoicesblog.com/>

We have a new blog called Standpoints! We have just finished our first year of blogging. To date we have published over 20 articles from our own research team and guest bloggers/researchers to convey our work to the general public.

Dr. Jennifer Steeves

Oct 2018, *The Seeing Brain*, YU Scholars Hub, Markham Public Library, Markham.

Dr. Jonathan Weiss

<https://asdmentalhealth.blog.yorku.ca/>

I am involved in developing mental health literacy materials for autistic people and their families, to provide communities with ways to promote good mental health and wellness. We are also continuing to manage the Autism Mental Health Blog to make research accessible.

Dr. Laurie Wilcox

I served on the NSERC Discovery Grants: Biological Systems and Functions (1502) Adjudication Committee.

I participated in an NSERC information event co-organized with an NSERC programme officer (Discovery grant preparation). I discussed my experience on the evaluation group and how to write a successful grant application (June).

I co-organized, and moderated a panel discussion on human computer interaction. This was an Industry-academic research innovation event with over 200 attendees and 4 panel discussions in June.

I gave a presentation reflecting on industry-academic research collaborations and highlighting my collaboration with Qualcomm Canada at an event held by Innovation York (VPRI) in April

EMERGING RESEARCHERS

Students & Post-Doctoral Fellows

GRADUATE STUDENTS

CPA Awards - Certificates of Academic Excellence - Masters Level

Miranda Di Lorenzo
Tal Davidson
Gregory Giovannini

CPA Awards - Certificates of Academic Excellence - Doctoral Level

Dr. Lauren Campbell
Dr. Kaley Roosen
Dr. Katrina Fong

CCDP (Council of Canadian Departments of Psychology - Teaching Assistantship Award)

Matthew Cutone
Kimberley Hara
Iana Ianakieva
Massimo Di Domenico
Stevenson Baker

Michael Friendly Award for Quantitative Methodology Research

Jala Rizeq

Norman S. Endler Research Fellowship in Psychology

Julia Riddell

EMERGING RESEARCHERS

Students & Post-Doctoral Fellows

Graham Reed Bursary

Ronda Lo

Sandra Pyke Award for Graduate Excellence in Social Personality Area

**Caroline Erentzen
Marina Rain**

Award for Excellence in Psychotherapy Process Research

Chrissy Macaulay

Clinical Psychology Student Excellence Award

Brittany Rosenbloom



All Graduate Awards Recipients from Nov 4 2018 ceremony with MA/PhD Certificates of Excellence and CCDP awards, etc.

EMERGING RESEARCHERS

Students & Post-Doctoral Fellows

Graduate Student YUPC Award in Clinical Developmental Psychology

Rebecca Shine

Graduate Student Research Award in Clinical Developmental Psychology

Hannah Gennis

Leadership Award in Clinical Developmental Psychology

Joshua Doidge

Graduate Student MA Award in Clinical Developmental Psychology

Rivka Green

Professor Raymond E. Fancher Award

Ian Davidson



Adam Blake holding a mug which says, "Don't ask me about my thesis!"

EMERGING RESEARCHERS

Students & Post-Doctoral Fellows

UNDERGRADUATE STUDENTS

The W.B. Templeton Honours Thesis Award

Amanda Bockaj

Goranson Memorial Research Award - First Place

Marette Abdelmaseh

Goranson Memorial Research Award - Second Place

Amanda Bockaj

Kuszyszyn award for originality

Alexis M. Fabricius



Dr. Amy Muise and her honours student, Amanda Bockaj winning one of the best poster awards at undergraduate thesis poster day

EMERGING RESEARCHERS

Students & Post-Doctoral Fellows

CPA Certificates of Academic Excellence (B.A.)

Amanda Bockaj

CPA Certificates of Academic Excellence (B.A.)

Rebecca Hudes

CPA Certificates of Academic Excellence (B.A.)

David Herman

The Ivana Guglietti-Kelly Award

Shalyn Isaacs

Please inform us about a highlight you/your lab (including Honours thesis students, graduate students, and post-docs) has accomplished over the past year that you feel is particularly noteworthy.

***Dr. Alyssa Counsell**, a graduate of my Robust Statistics Lab, is now an Assistant Professor within the Department of Psychology at Ryerson University. – **Dr. Rob Cribbie**

I just finished a postdoc but am a member of the Trauma and Attachment Lab, and my colleagues are doing work on researching non-verbal cues of attachment in therapy. – **Dr. Leah Keating**

Submitting an R01 grant to NIH for the first time! – **Dr. Shayna Rosenbaum**

A congratulations to ***Dr. Ami Tint**, who completed the final stage of the program (her clinical internship) and is now a postdoctoral fellow at CAMH! – **Dr. Jonathan Weiss**

PSYCHOLOGY UNLOCKED

EXPERIENTIAL LEARNING MOMENTS

Dr. Mary Desrocher

Role plays of interview skills.

Dr. Erez Freud

As part of the neuropsychology of abnormal behaviour class, my students participated in a fascinating debate in which they argued for different plausible neural architectures that underlie human cognition.

Dr. Ingo Fründ

In "Intermediate Research Methods", I had students perform small experiments to give them an opportunity to explore standard methods directly in the application.

Dr. Christopher Green

I continue to seek the DeLorean that will transport me and my students into the past. It is my quest! Kant's lecture hall. Wundt's lab. Freud's clinic. Oh wait. They all worked in German. My students won't understand any of it. Neither will I, come to think of it. ;-).

Dr. Laurence Harris

As part of my graduate class I involve them in the research going on in my lab, with tours and demonstrations of the impressive, large facilities we have available for disorienting people.

Dr. Leah Keating

We had discussions every class, in which students were encouraged to draw on their opinions, lived experience, and knowledge from within and outside the course.

PSYCHOLOGY UNLOCKED

EXPERIENTIAL LEARNING MOMENTS

Dr. Suzanne MacDonald

Having 300 undergraduates do projects at the zoo in my PSYC 3280 Animal Behaviour class this fall. Exhausting, but well worth it!

Dr. Raymond Mar

Graduate students in my course gained hands-on experience doing many of the things they will do as professors, giving an hour-long lecture and providing detailed critical feedback to their peers; and I am developing online tutorials for learning research methods concepts and R (the statistical software program) at the same time.

You can find an example here: https://remindery.shinyapps.io/1Remindery_intro/

Please inform us about a highlight you/your lab (including Honours thesis students, graduate students, and post-docs) has accomplished over the past year that you feel is particularly noteworthy.

Perry, A., Koudys, J., Prichard, A., & *Ho, H. (2019). *Follow-up study of youth who received EIBI as young children*. Behavior Modification, 43(2), 181-201.

The paper listed above is the longest published follow-up study of adolescents/young adults with autism who received Early Intensive Behavioural Intervention. This was a longitudinal study with 4 time points (pre-, post, follow-up after mean of 6 years, follow-up after mean of 10 years). Results indicated general stability from the end of intervention, i.e., poor outcome children were still doing poorly; good outcome children were generally still doing well). The subgroup who had made large gains during treatment were generally functioning in the average range in various domains of cognitive and psychological functioning. – Dr. Adrienne Perry

PSYCHOLOGY UNLOCKED

EXPERIENTIAL LEARNING MOMENTS

Dr. Jennifer Steeves

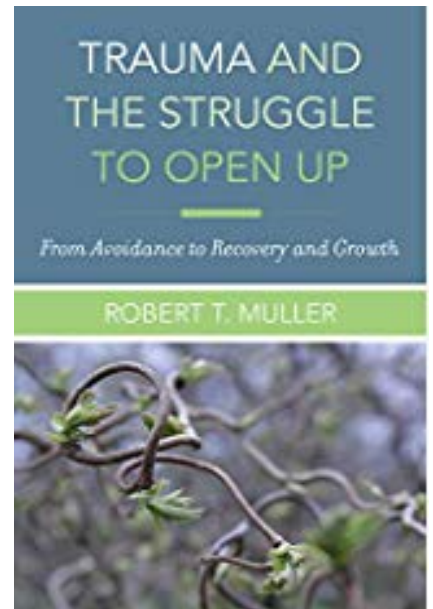
I have modified my seminar course in sensation and perception to become essentially a lab course. We do hands-on experiments and replicate classic experiments in the field. The students learn how to write a proper lab report. We actually have fun!

Dr. Jonathan Weiss

I brought my children in to participate as ‘mock clients’ with my graduate intervention class. Seeing the students work to implement what we learned in class with a 7 year old and 3 year old was wonderful and I know was a highlight for the students (and my kids) as well!



The Undergraduate Psychology Student Association
“Meet the Profs” day



New book release from Dr.
Robert Muller – Trauma and
the struggle to open up: From
avoidance to recovery and
growth

THE YORK TEACHING COMMUNITY

CONTRACT FACULTY CONTRIBUTIONS

Selected Publications and Research

Avitzur, E. (2018). *Self-fragmentation in Relation to the need for Belonging in the context of Adoption and Immigration*. Presented at the 9th joint international in psychoanalysis. Halifax, NS.

Esplen, M. J., Leszcz, M., Hunter, J., Wong, J., Leung, Y. W., Toner, B., Messner, S., Glendon, G., **Stuckless, N.**, & Butler, C. (2018). A randomized controlled trial of a supportive expressive group intervention for women with a family history of breast cancer. *Psych-oncology*, 27(11), 2645-2653.

Keating, L., Bauer, G. R., MacKay, J., Robinson, M., Frewen, P., & Ross, L. E. (2018, June). *Experiences of Abuse and Discrimination Among Bisexual People Living in Ontario*. Paper presented at Preaching to the Choir: An International LGBTQ Psychology Pre-Conference at the International Congress of Applied Psychology. Montreal, QC.

Keating, L., & **Muller, R. T.** (2018, June). *LGBTQ+ People's Experiences of Accessing Trauma Therapy*. Paper presented at International Congress of Applied Psychology. Montreal, QC.

Marchese, F. (2018). An overlooked sexual element in the Breuer-Anna O. case. *North American Journal of Psychology*, June, vol. 20, no. 2.

Marchese, F. (2018). Domestication of the human: The biology and psychology of aesthetics. *North American Journal of Psychology*, 20(3).

Rokach, A. (Ed.) (2018). *Emotions and their influence on our personal, interpersonal and social experiences*. London, UK: Routledge.

Rokach, A. (2018). How are love, loneliness, and health related? *Psychology and Psychotherapy Research Studies*, 1(5). DOI: 10.31031/PPRS.2018.01.000521

Rokach, A. (2018). Loneliness, Gender & Culture: a mini review. *Journal of Psychiatry and Behavior Therapy*, 1, 26-30.

Note: Faculty members' names are in red; Psychology students' names have a red asterisk next to them.

PARTNERING WITH SENECA COLLEGE



From left to right: Barb Pimenoff and Dr. Jill Rich, the York-Seneca Rehabilitation Services Certificate Program (RSCP) RSCP Coordinators.

Established in 1981, RSCP is the only program of its kind in Canada.

At the end of the program, students receive both a B.A./B.Sc. Or B.A./B.Sc. (Honours) degree with a Psychology focus from York University, as well as, a Certificate in Rehabilitation Services from Seneca College. The program requires four (B.A./B.Sc.) or five (B.A./B.Sc. Honours) years of study.

In addition to York and Seneca coursework, students complete 800 hours of fieldwork experience at placements such as Surrey Place, WSIB, and the Insurance Services Sector.

CLINICAL TRAINING IN ACTION: YORK UNIVERSITY PSYCHOLOGY CLINIC

YUPC welcomed several new team members during the past year. A clinical manager position was created and filled by Dr. Robin Mitchell who joined the team in February providing much needed assistance particularly in assessments. She is supervising both our clinical developmental and adult clinical graduate students in this important competency area. As the clinic has become busier in the early evening hours, we have also added a work-study position to our roster and currently Elizabeth Maiolo, an undergraduate student majoring in psychology, is providing reception duties from Monday through Thursdays. The clinic was once again able to offer several prevention focused interventions through our mindfulness meditation groups and Memory and Aging program. The clinic was also pleased to offer a new program, Circle of Security, which is an evidence-based intervention program for parents and children focused on relationships. Many of the parents participating in this program came from one of the daycare centres located on campus – so it helped us to continue to build important partnerships.

Our student advisory group which helps to ensure that our services continue to meet our graduate students' training needs, suggested that we develop a greater focus on the development of supervisory skills. As a result, Dr. Adrienne Perry provided a mini-workshop in this area and we developed a checklist of competencies to ensure that when supervisory experiences are provided in assessment, the senior student receives targeted feedback not only in assessment skills but also in their supervision of a junior student. The clinic's continuing education program continues to be an important revenue stream for our operations. This year apart from 10 workshops in Emotion-Focused Therapy, our own Dr. Jonathan Weiss presented a two-day training session on CBT to Address Emotional Functioning in Youth with ASD.



A photo of the YUPC Open House for MA-1 Students with **Dr. Louise Hartley**

EDITORIAL TEAM

Dr. Jennifer A. Connolly - Psychology Department Chair

Dr. Joel Goldberg - Former Chair of Psychology Department

CONTACT US

The Department of Psychology, Faculty of Health, York University

Behavioural Science Building, Room 101

4700 Keele Street

Toronto, ON M3J 1P3

Website: <http://psyc.info.yorku.ca/>

Undergraduate Psychology Office

Behavioural Science Building, Room 291/292

Telephone: 416 736 5117 | Email: psyc@yorku.ca

Website: <http://psyc.info.yorku.ca/>

Graduate Psychology Office

Behavioural Science Building, Room 297

Telephone: 416 736 5290 | Email: gradpsyc@yorku.ca

Website: <http://psychology.gradstudies.yorku.ca/>

Graduate Admissions

Telephone: 416 736 5000

Website: <http://futurestudents.yorku.ca/graduate>

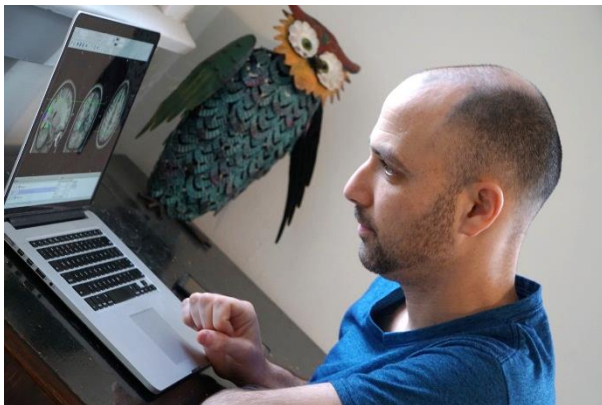
PHOTO GALLERY



Graduate Psychology team with Judy Tse and Rhonda Lenton as nominees of Harriet Lewis Service Excellence Awards, September 2018.



Dr. Shayna Rosenbaum with the international co-authors of the book that we published this year on human spatial navigation (Princeton University Press). L-R: Hugo Spiers from University College London, Shayna Rosenbaum, Veronique Bohbot from McGill, Arne Ekstrom from University of Arizona.



New Brain, Behaviour and Cognitive Sciences faculty member, Dr. Erez Freud.



Dr. Rebecca Pillai-Riddell, Dr. Maria Fitzgerald, PhD, FMEDS FRS and MRC postdoc fellow, Dr. Laura Jones.

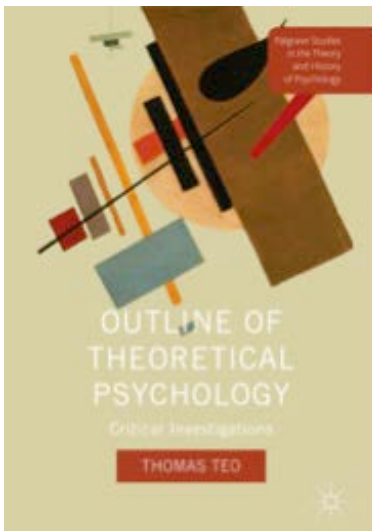
PHOTO GALLERY



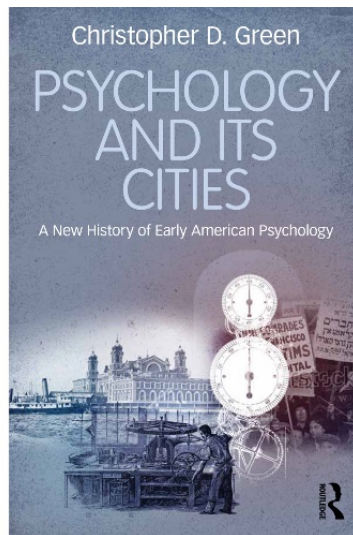
Photo of the Dr. Jennifer Connolly lab group.



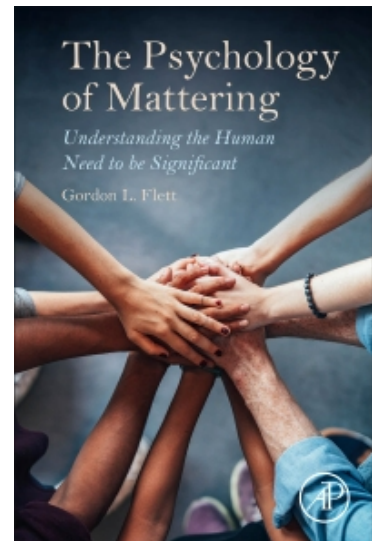
The Freud Lab's new logo



New book release from Dr. Thomas Teo – Outline of Theoretical Psychology



New book release from Dr. Christopher Green – Psychology and its Cities: A New History of Early American psychology



New book release from Dr. Gordon Flett – The Psychology of Mattering: Understanding the Human Need to be Significant

PHOTO GALLERY



Tal Davidson, Susannah Mulvale, Raha Sheivari (HTC graduate students), Alexandra Rutherford, and Thomas Teo at the Pathologies of Capitalism Conference at the Graduate Center of CUNY in New York City.



Members of the Psychology's Feminist Voices research team during Women's History Month in October, 2018. Front row, L to R: Moriah Gillette, Tal Davidson, Sonia Sandhu, Harveen Dhatt. Back row, L to R: Alexandra Rutherford, Shalyn Isaacs, Susannah Mulvale, Sonia Wasef, Lucy Xie.



Dr. Amy Muise's lab holiday party-bowling at the Ballroom



Dr. Karen Fergus speaking at the undergraduate Psychology orientation day

PHOTO GALLERY



Laurence Harris and Nils Bury (post doc) working with David Saint-Jacques as he performs the VECTION experiment on the International Space Station.



Ph.D. student, Molly McCarthy about to join surgeon, Dr. Shady Ashamalla, in the operating room at Sunnybrook Health Sciences Centre... One notable example of the lengths Psychosocial Oncology Lab members will go to bolster study recruitment!



Khushbu Patel with Dean, Thomas Lobel, at the FGS Awards Nov. 15, 2018.

PHOTO GALLERY



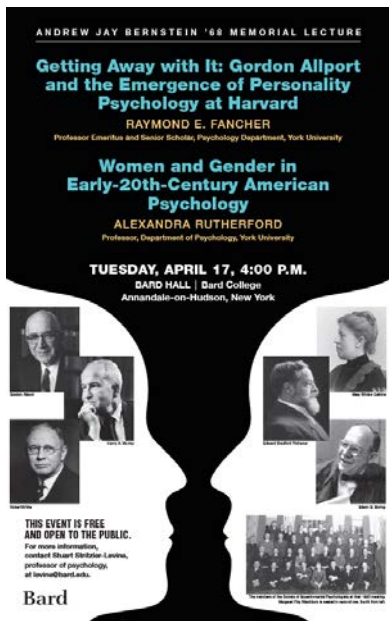
Dr. David Flora, Dr. Christine Till, and Rivka Green, a graduate student of Dr. Till's.



New Quantitative Methods faculty member, Dr. Phil Chalmers.



Dr. Naomi Andrews, a post-doctoral fellow at the Lamarsh Centre and Mothercraft's Breaking the Cycle program.



One of my research highlights was being invited to give the Andrew Bernstein Memorial Lecture at Bard College in NY with my former PhD supervisor and HTC area founder, Ray Fancher. – Dr. Alexandra Rutherford



Annalise D'Souza as York's contestant at the Three-Minute Thesis which was held at York this year.

PHOTO GALLERY



The Psychosocial Oncology Lab (Dr. Karen Fergus) at the Canadian Association for Psychosocial Oncology Annual Conference



Department of Psychology
Faculty of Health
Human Pain Mechanisms Lab



YorkU Human Pain Mechanisms Lab



Dr. Christine Till's lab.



PHOTO GALLERY



Dr. Jeni Pathman (second from right) and her students at the Toronto Zoo.



Dr. Anne Russon and her students in the jungle researching orangutans.

PHOTO GALLERY



The Quantitative Methods at the 2017 Holiday Party.



Most important research involved was publishing a comment in Nature Reviews Neuroscience highlighting the top 3 research and funding priorities for the transition of acute pain to chronic pain: (1) understanding and addressing plasticity mechanisms that promote persistent pain and resolution mechanisms that may reverse persistent pain; (2) designing and conducting prospective studies for susceptibility and resilience factors underlying the transition from acute to chronic pain; and (3) conducting mechanistic trials of risk and resilience to chronic pain with meaningful outcome measures.

– Dr. Joel Katz